

PARENT GAZETTE NEWSLETTER

Parent/Child Incorporated (PCI) - Back to School Edition

www.parentchildinc.com

CEO MESSAGE

Dear PCI Family,

Welcome back to school, little adventurers! It's time to dust off our backpacks, sharpen our pencils, and embark on a brand-new journey of learning and discovery. Our preschool becomes a bustling hub of excitement and curiosity as we reunite with old friends and greet new ones. From exploring colors and shapes to singing songs and telling stories, each day holds endless opportunities for growth and fun. Let's dive into this new school year with open hearts and eager minds, ready to explore, create, and make cherished memories together!

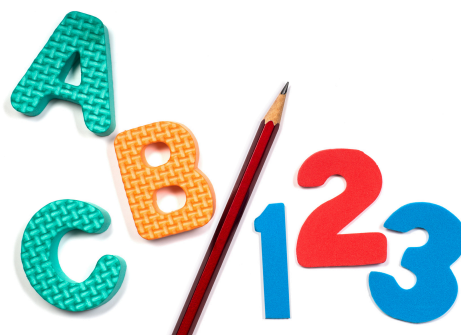


Dr. Sharon Small,
Chief Executive Officer/HS/EHS Director
MEd, MA, PhD
"Growing San Antonio's Tomorrow...Today!"



NATIONAL HEAD START ASSOCIATION

NHSA, National Head Start Association, is a United States Department of Health and Human Services program that provides comprehensive early childhood education, health, nutrition, and parent involvement services to low-income children and their families. The National Head Start Association is a non-profit organization that ensures all children have access to high-quality, comprehensive early childhood education services. It advocates for policies that support the Head Start program and provides resources and support to Head Start programs across the country.



ATTENDANCE



Daily Attendance Expectations

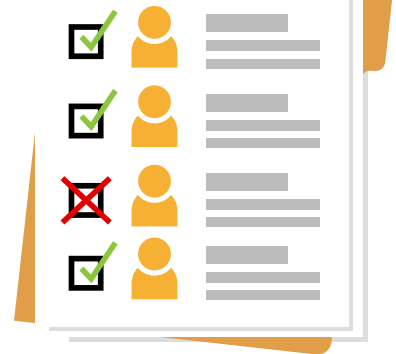
Regular daily attendance is essential for your child's learning success and for meeting Federal Head Start guidelines. Children benefit most when they participate in daily learning activities, which prepare them for a successful transition into public school.

To support this, our goal is to maintain a 96% Average Daily Attendance (ADA) for all enrolled children.

Parents/Guardians must bring their child to the Early Learning Center on time each day and pick them up on time each afternoon. If your child will be absent or late, you must contact the Education Center Coordinator or Family Service Worker by phone no later than 7:30 a.m. and provide the reason for the absence. A written note explaining the absence should also be submitted. All reported absences are documented in the child's file.

If a child is absent for ten (10) consecutive days without communication or an approved excuse, the child's slot may be declared vacant and offered to another family. Parents are also required to sign a Family Partnership Agreement acknowledging their commitment to maintaining regular, on-time attendance. Thank you for partnering with us to support your child's early learning and development.

ATTENDANCE

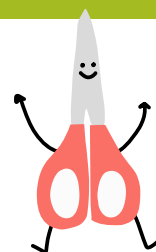
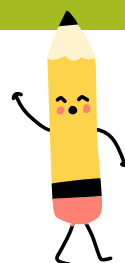


TEXT NOTIFICATION

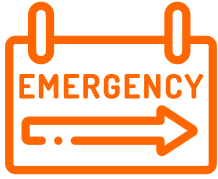
Join the PCI EZ Texting notification system. The notification system provides parents and staff with key information, such as weather-related cancellations, early dismissals, and emergencies. You will be the first to know with EZ Texting Communications' SMS text. Please contact your ECC to sign up. Remember, data and message rates may apply. Please check with your telephone carrier if you are having difficulties receiving text messages.

MISSION STATEMENT

**The Mission of
Parent/Child Incorporated is to
provide
high-quality early childhood
developmental and educational
services in order to empower our
children and their families to
become responsible citizens who
value education and community.**



Emergency Closure Protocol



Emergency Closure Procedures for PCI

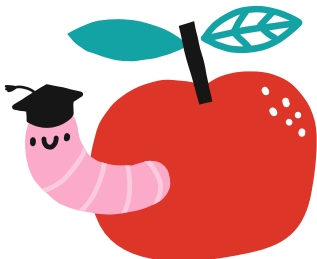
In the event of emergency conditions affecting our area, Dr. Sharon Small, CEO of Parent/Child Incorporated, will decide whether to close the agency.

Dr. Small will follow guidance from local school districts, particularly the Northside Independent School District. Once a closure decision is made, the information will be shared with the Executive Team. The HS/EHS Operations Coordinator will then notify the appropriate staff, including Education Center Coordinators (ECCs). ECCs will inform the center staff of the closure. Family Service Workers and Teachers will notify parents directly.

Notification Methods:

PCI's official notification system will be used to inform both parents and staff. Closure details will also be posted on the PCI website: www.parentchildinc.com. If applicable, tune in to local news broadcasts at 5:00 a.m. for announcements regarding PCI closures.

Important Reminders: If a closure is necessary, makeup days will be scheduled. Families are encouraged to have an emergency plan in place in case centers close, open late, or dismiss early. Thank you for your attention to these procedures and for helping us keep everyone safe and informed.



Did you know that Parent/Child Incorporated is active on social media? We are committed to improving communication and engagement with our amazing parent community. Social media will be an excellent platform for us to share updates, insights, and resources to enhance your child's learning journey.

We will use our social media channels to inform you about upcoming events, share highlights from our activities and programs, and provide tips and suggestions to help you get more involved in your child's education. It's also a space to connect with other parents, share experiences, and celebrate your children's milestones.

Follow us on PCI's social media platform(s) to stay connected and join the conversation. We are excited to interact with you online and build a lively online community that reflects the warmth and support of our PCI family.



PARENT INITIATIVE CARD

Thank you for your support!



Welcome to the PCI Incentive Card Program!

A fun and rewarding way to encourage all parents to get excited and involved in their child's learning and activities! Each parent will receive a PCI Card, customized with their center's logo. This card features activities designed to support your child's growth and development. When you participate in an activity, your ECC (Education Center Coordinator) will mark your card with a special stamp. Collect six (6) stamps and receive a special incentive from one of our excellent participating vendors—something we're sure you'll enjoy! Get with your child's ECC for more details. Let's work together to equip you with the knowledge and tools to support your child's journey at PCI. Let's make the 2025–2026 school year an exciting parent power and partnership year!

Join PCI Policy Council

Make a difference in the lives of children and families in our Head Start and Early Head Start programs! The Policy Council comprises passionate parents, guardians, and Executive Staff who collaborate to guide and strengthen our programs. Members are elected by parents of enrolled children, often beginning their journey through participation in a Parent Committee.

Meetings are held monthly on Tuesdays at 6:00 p.m. This is your opportunity to:

- ✓ Have your voice heard.
- ✓ Help shape decisions that impact our programs.
- ✓ Be a voice for other families.

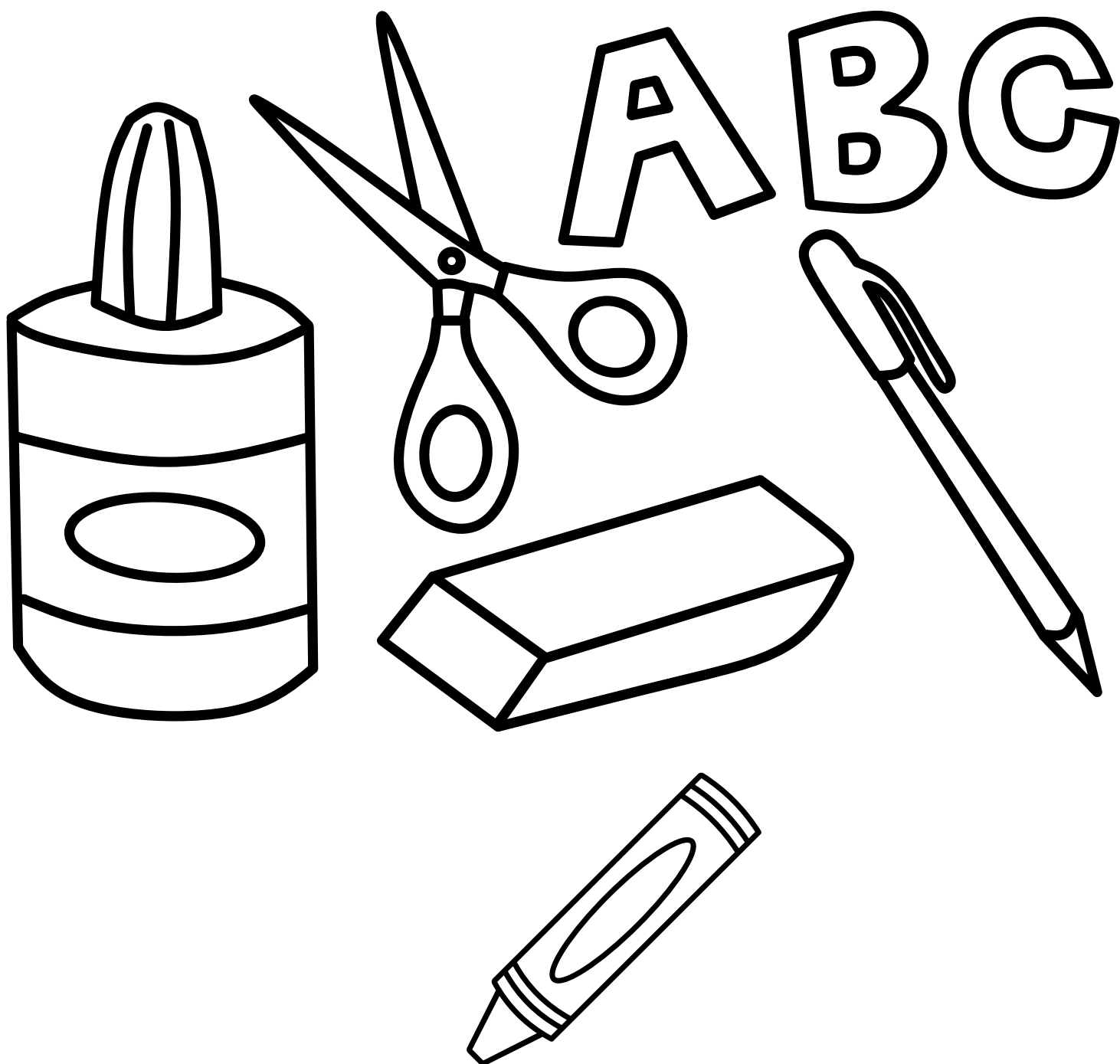
Get involved. Make an impact. Be a leader.
Your ideas and input matter. Join us and be part of something meaningful!

BACK TO SCHOOL

Transition Ceremony

Parent/Child Incorporated (PCI) centers will host Transition Ceremonies for children entering Kindergarten. If your child qualifies to return to PCI for the 2025-2026 school year, they will transition in June 2025 instead. We are incredibly proud of our children and the dedicated teaching staff who have worked tirelessly to equip them for success. For any questions or concerns about the transition process, please contact your Education Center Coordinator.

BACK TO SCHOOL



September 2025

EVENTS



September Emergency
Preparedness Month



September 11th - Patriot Day/
the National Day of Service
and Remembrance.



Grandparents' Day Breakfast - At all
PCI Early Learning Centers - September 5th



Hispanic Heritage Month
Children's Hispanic Heritage Presentation:
10:00 a.m. on September 17th
at all PCI Early Learning Centers!

**Parent/Child Incorporated (PCI)
of San Antonio & Bexar County**
7815 Mainland
San Antonio, Texas 78250
www.parentchildinc.com
(210) 226-6232



National Family Day - September 22nd